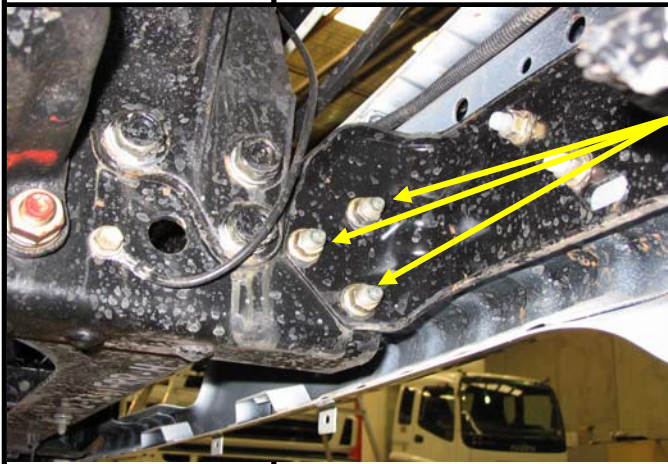


B3IS0974TSY
ISUZU FY FRR MY06 06-07 Deluxe 3 Bullbar
Fitting Instructions



REMOVE 3 BOLTS PER SIDE RHS SHOWN
DISCARD BOLTS AND NUTS
REMOVE BUMPER BAR



DISCONNECT WIRING



BUMPER BAR REMOVED

B3IS0974TSY
ISUZU FY FRR MY06 06-07 Deluxe 3 Bullbar
Fitting Instructions



LOOSEN BOLT THAT HOLDS EARTH
TERMINAL.



ROTATE WIRE INTO THIS POSITION
TIGHTEN BOLT.



DRILL 3 HOLES PER SIDE TO 1/2"
RHS SHOWN.



REMOVE BULLBAR BRACKET FROM
BULLBAR

FIT TO TRUCK USING 4 x 1 1/2" X 1/2"
BOLTS, FLAT WASHER AND NYLOC
NUT PER SIDE.

USE TWO WASHERS ON THE BACK
OFF THE REAR BOLT TO COVER LARGE
HOLE IN CHASSIS. LEAVE LOOSE

LHS SHOWN RHS SAME.

B3IS0974TSY
ISUZU FY FRR MY06 06-07 Deluxe 3 Bullbar
Fitting Instructions



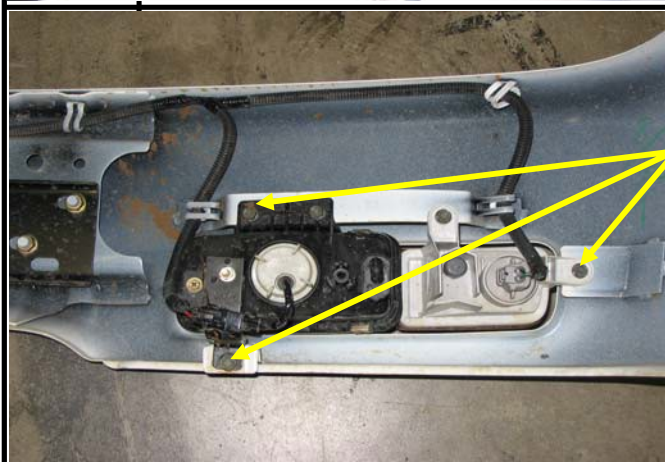
MOUNT FITTED.



FIT BULL BAR MOUNT USING
2 x 9/16" BOLTS, 4 FLAT WASHERS
AND 2 NYLOC NUTS.

TIGHTEN SO BOLT ENGAGES NYLOC
BUT WILL ALLOW BULL BAR TO MOVE.

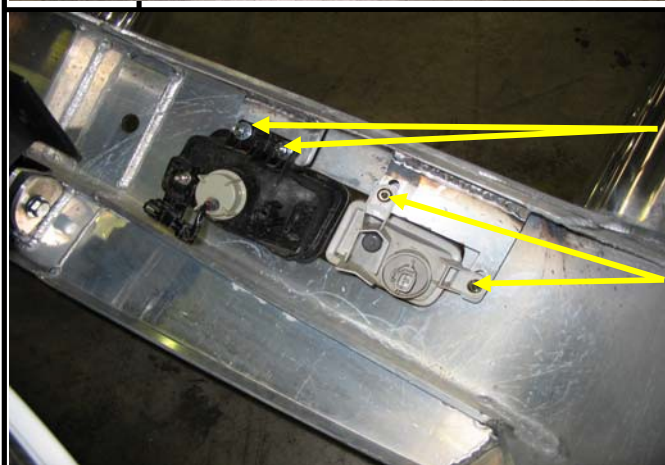
LHS SHOWN RHS SAME.



DISCONNECT WIRING HARNESS FROM
LAMPS.

REMOVE FOG LAMP AND INDICATOR.

KEEP BOLTS.



FIT LAMPS TO BULL BAR AS SHOWN.

USE 2 x 8mm X 25mm BOLTS NUTS
AND WASHERS SUPPLIED TO FIT FOG
LAMP. LEAVE SLIGHTLY LOOSE.

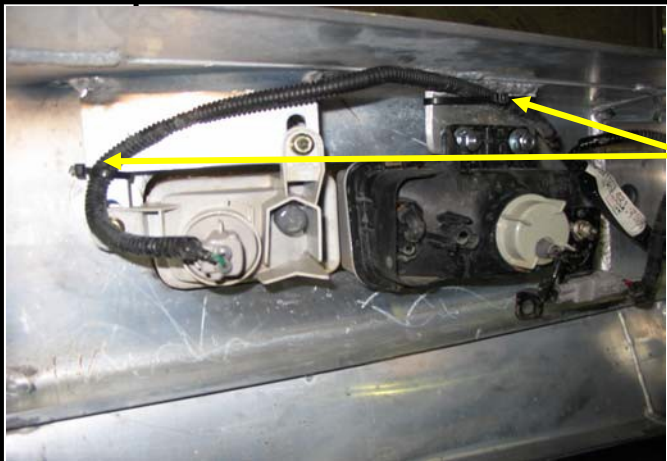
USE ORIGINAL BOLTS WITH NEW NUTS
AND WASHERS TO HOLD INDICATOR.
LEAVE SLIGHTLY LOOSE.

RAISE BULL BAR AND ALIGN LAMPS
TIGHTEN BOLTS.

B3IS0974TSY
ISUZU FY FRR MY06 06-07 Deluxe 3 Bullbar
Fitting Instructions



REMOVE WIRING HARNESS FROM ORIGINAL BUMPER BAR.



FIT WIRING HARNESS TO BULL BAR AS SHOWN

USE CABLE TIES TO HOLD IN PLACE AS REQUIRED.

LHS SHOWN RHS SAME.



PLUG WIRING HARNESS BACK INTO MAIN HARNESS.



RAISE AND SECURE BULL BAR, LOCK BULL BAR IN PLACE USING THE TWO EYE BOLTS SUPPLIED.
 INSET TOW PIN INTO BAR

ALIGN BULL BAR TO VEHICLE, ENSURING BULL BAR GAPS ARE EQUAL.

TORQUE ALL FASTENERS.

LOCATION	SIZE	TORQUE
bull bar mount (RHS)	1/2"	90 Nm
bull bar mount (LHS)	1/2"	90 Nm

B3IS0974TSY
ISUZU FY FRR MY06 06-07 Deluxe 3 Bullbar
Fitting Instructions



FIT WARNING LABEL TO BACK OF CAB NEAR CAB TILT LEVER.



FIT WARNING LABEL TO DRIVERS' DOOR AS SHOWN.

ENSURE NUMBER PLATE IS CLEARLY VISABLE

Note: When fitting/refitting the licence plate to the vehicle, ensure there is no obstruction to licence plate vision in accordance with local authorities. If required relocate licence plate to an alternate location.

Further VFPS Notes:

- a) Do not attach VFPS to the vehicle using anchorages not intended for this purpose (e.g. engine mounting bolts).
- b) Do not use this product for any vehicle make or model, other than those specified by the VFPS manufacturer.
- c) Do not remove the plaque or label from the VFPS.
- d) Do not modify the structure of the VFPS in any way.
- e) No accessory or fitment should project forward of the VFPS forward profile.
- f) **ENSURE THESE INSTRUCTIONS ARE LEFT WITH VEHICLE OWNER AND/OR OPERATOR.**

IMPORTANT INFORMATION

Periodically check bolts and nuts for correct tightness, especially if travelling on rough roads

B3IS0974TSY
ISUZU FY FRR MY06 06-07 Deluxe 3 Bullbar
Fitting Instructions

Bolt Kit

Quantity	Length	Diameter	Thread Pitch	Description
8	1 1/2 inch	1/2 inch	UNC	Bolt grade 8H/T
8		1/2 inch	UNC	Nyloc Nut
12		1/2 inch		Flat Washer
4	25 mm	8mm		Bolt Grade 8H/T
4		8mm		Hex Nut
4		8mm		Flat Washer
4		8mm		Star Washer
4		6mm		Whiz Nut
4		6mm		Flat Washer
1		195mm		Towpin
<u>Additions</u>				
1	Fitting Instructions			
2	Tilt Bullbar Warning Stickers			
4	Cable Ties			
<i>SEAL IN CLEAR BAG & TAPE TO STEEL MOUNT</i>				

<u>Attached to Bullbar</u>				
2		3/4 inch	UNC	Eye Bolt Grade 8H/T
2		3/4 inch		Flat Washer
2	2 1/2inch	9/16 inch	UNC	Bolt Grade 8H/T
2		9/16 inch	UNC	Nyloc Nut
4		9/16 inch		Flat Washer
<u>Additions</u>				
1	Steel Bullbar Mounts			

DESPATCH CHECKLIST

B3IS0974TSY

ISUZU FY FRR MY06 06-07 Deluxe 3 Bullbar

Work Order #		Photo of steel mount on back of page
Finish:		
Transport:		
Due Date:		

- | | | | |
|----|-------|---|---|
| OC | _____ | 1 | Steel mounting bracket |
| OC | _____ | 1 | Bolt kit |
| OC | _____ | 2 | 3" Overrides (CA01 Plastic) |
| OC | _____ | 2 | Custom Alloy Badges – Fitted to Overrides |
| WR | _____ | 1 | Steel Mounting Bracket – Fitted to Bar |
| WR | _____ | 2 | 3" Overrides (CA01 Plastic with CA badges) – Fitted to Bar |
| WR | _____ | 2 | Eyebolts (³ / ₄ " UNC ZP) and Washers – Fitted to Bar |
| WR | _____ | 2 | ⁹ / ₁₆ " x 2 ½ UNC Bolt Grade 8H/T – Fitted to Bar |
| WR | _____ | 2 | ⁹ / ₁₆ " Nyloc Nut – Fitted to Bar |
| WR | _____ | 4 | ⁹ / ₁₆ " Flat Washer – Fitted to Bar |
| WR | _____ | 1 | Bolt Kit – Taped to Mount |



Is this product "the best it can be" Yes
If NO fix before continuing

All parts checked and completed by:

Nut and bolts:	_____	Date	__/__/__
Order control:	_____	Date	__/__/__
Final wrap check:	_____	Date	__/__/__

B3IS0974TSY
ISUZU FY FRR MY06 06-07 Deluxe 3 Bullbar
Fitting Instructions

